

Contact: **JAMES SCOTT GERAS**
(415) 986.1647

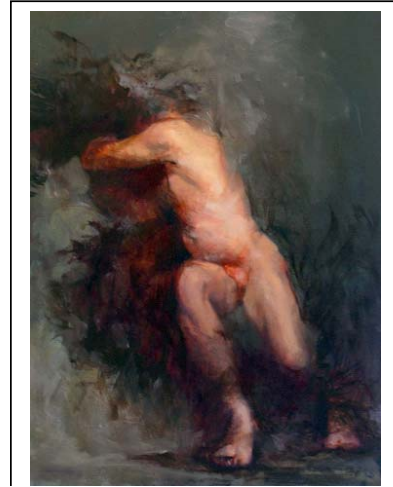
FOR RELEASE

Academy of Art University
In conjunction with
GERAS-TOUSIGNANT GALLERY

"The Inner Figure"

January 4TH – February 1ST 2010

**Event: ACADEMY of ART UNIVERSITY
IN CONJUNCTION WITH
GERAS – TOUSIGNANT GALLERY
IS PROUD TO INVITE YOU TO**



Title: Burdened
Oil on canvas
18" x 24"

"The Inner Figure"

January 4TH – February 1ST 2010

Opening Reception: January 7th , 5:30 p.m. – 7:30 p.m.

for artist:

ROSS BOWNS

**Location: Academy of Art University
625 Gallery
625 Sutter St.
San Francisco, CA 94102**

Opening Reception: January 7th , 5:30 p.m. – 7:30 p.m.

Hours: Monday-Friday 8:00 a.m. – 5:00 p.m.; Saturday 10:00 a.m. – 5:00 p.m.

COST: Free



There is a reciprocal nature between what we see and our emotional states. We emotionally react to what we see and our emotions help provide context and meaning to what find in front of us. This is a conversation between perception and condition, a repetitive play in which new information is constantly changing our condition and that condition shapes how we receive that new data. My intention, in these paintings, was to convey this reciprocal nature within perspective. In particular, I was interested in capturing the interplay between our internal emotional content and the information we receive from others.

I believe that this conversation between our senses and emotions is a labored one. If we could listen in, we would hear vague references, half form sentences, and sudden outbursts mixed in with strong opinion and some fact. Much of this will be ignored by awareness and little is balanced by reason as this no dialog to find truth. Instead, we find a struggle to maintain the integrity of our condition we had just moments ago.

I focus on the human form because it expresses our internal content as well as being the devise use perceive the environment around us. I want to explore the ways we perceive body both as a physical fi and as a medium that communicates emotions within my paintings. There is an inherent incompleten in all of this. We can never really see all that is presented to us nor can we express fully our emotic being limited by what the body can and can not do. I use expressive and abstract techniques exaggerate, distort, and obscure the forms, suggesting a sense of an incomplete vision to exam perception and explore the emotional range that can be conveyed and using the human figure.